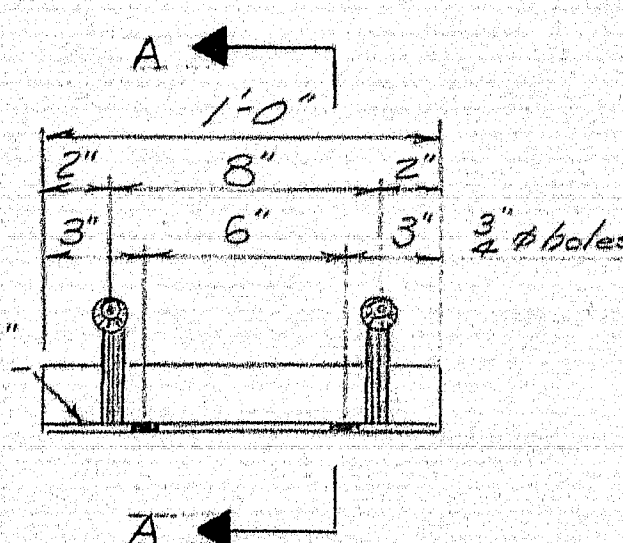
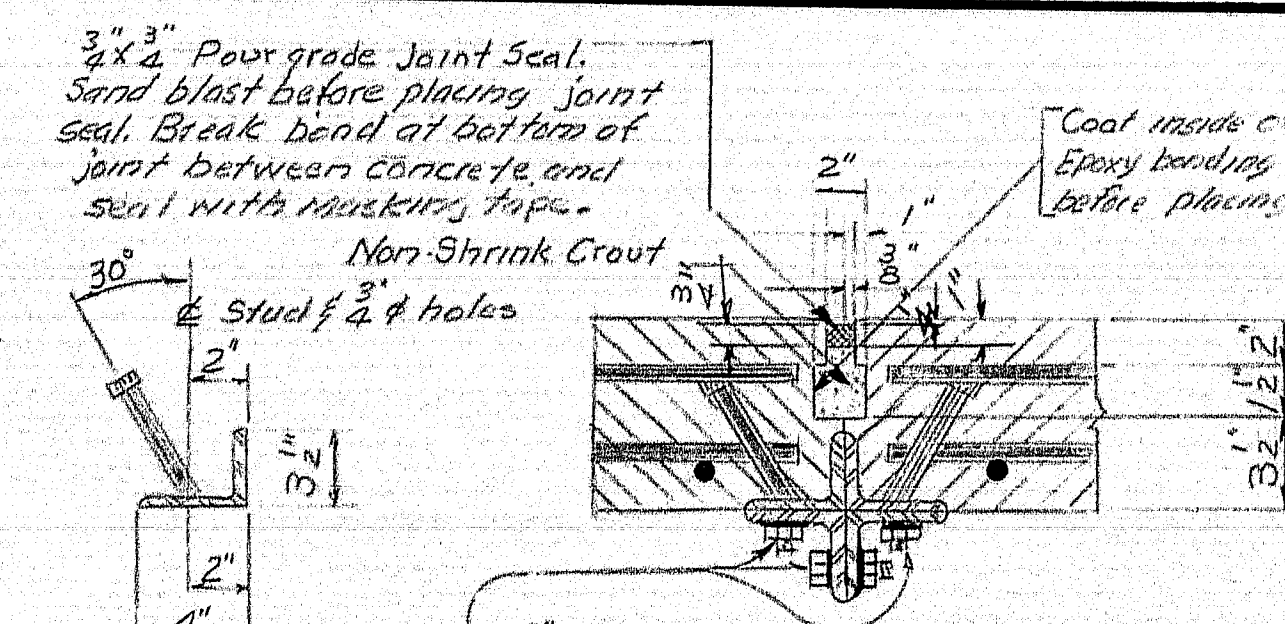


71
96 Required

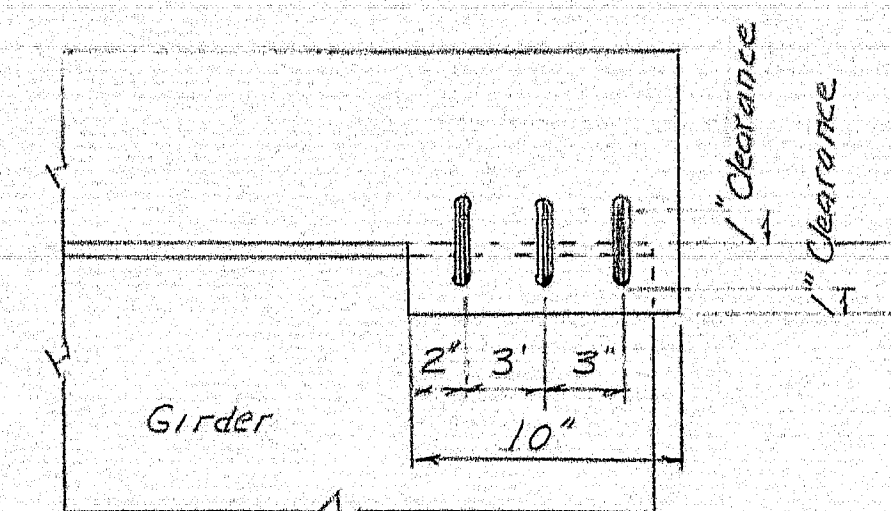


72
48 Required

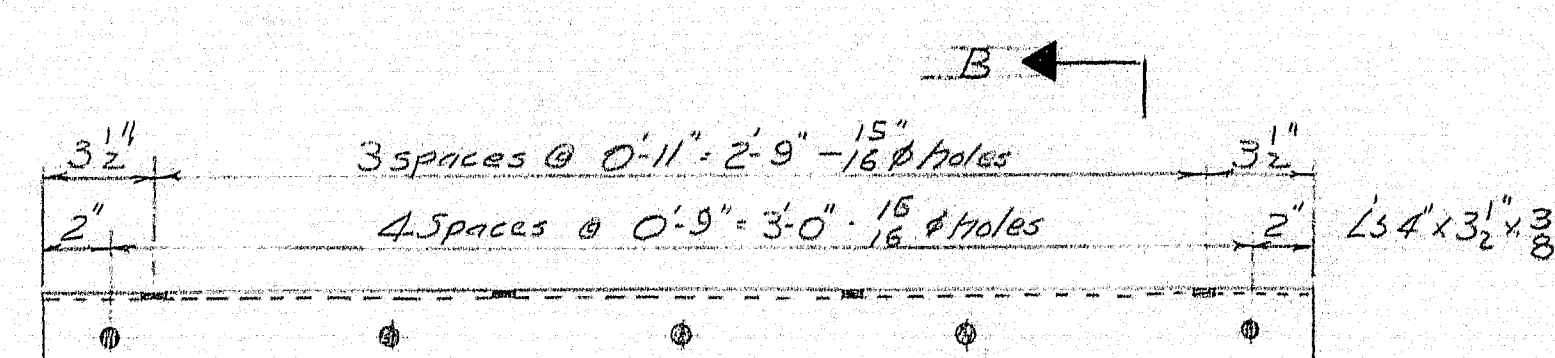


SECTION A-A

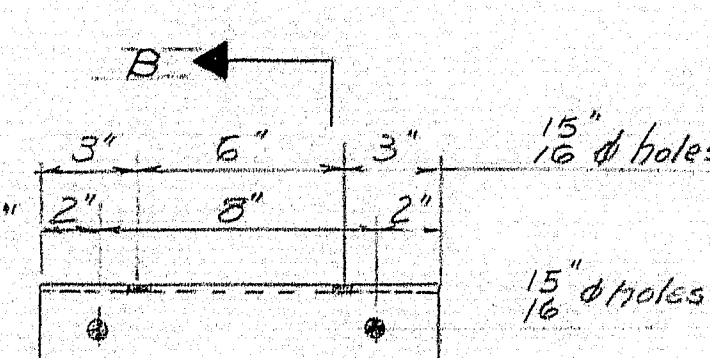
3/4" x 2" high strength bolts (A325)
 776 A 325 H5 Bolts Required
 776 A 325 NUTS "
 1064 A 325 Hard Washers "



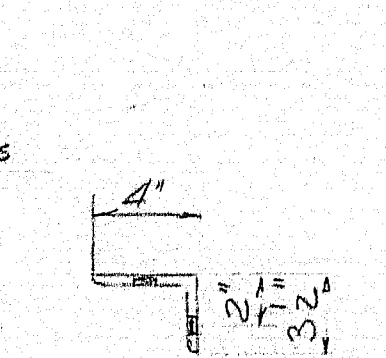
END SLAB THICKING



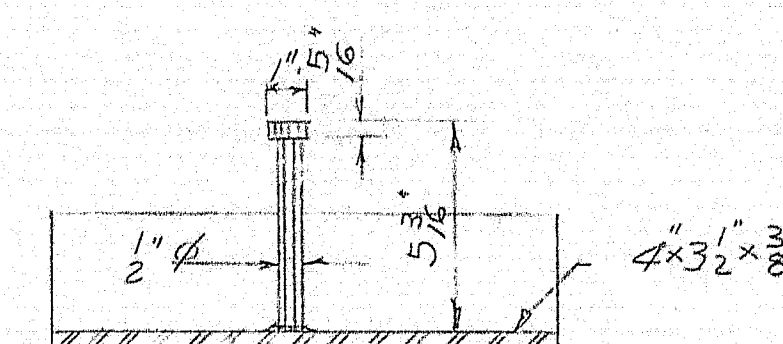
73
96 Required



of 4
48 Required

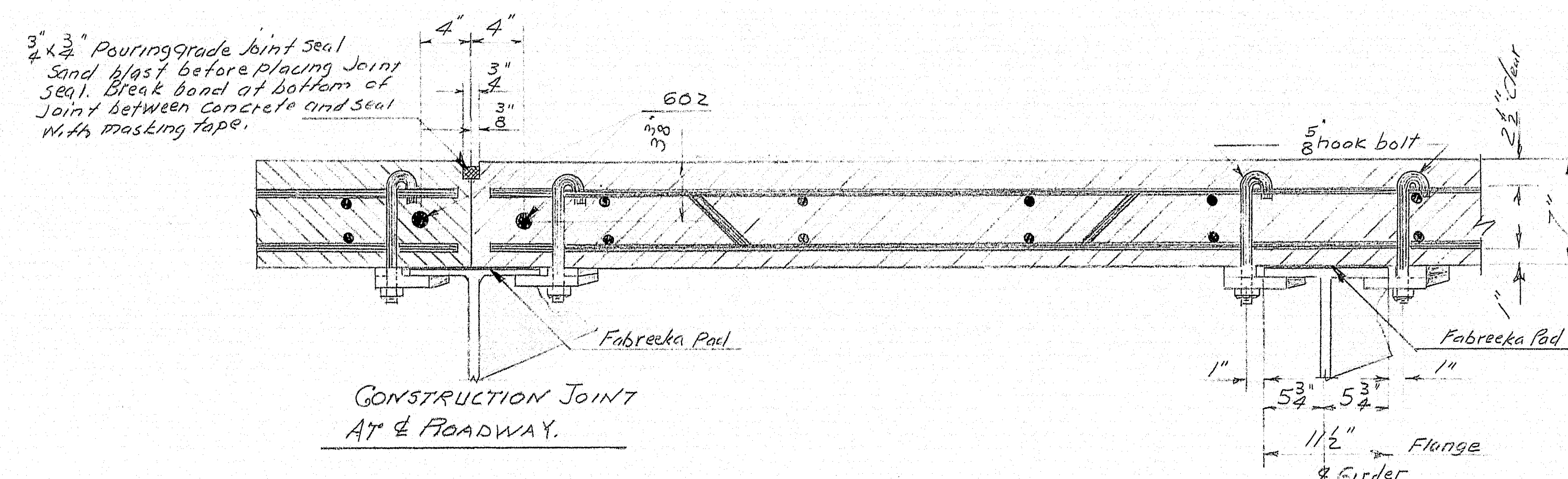


SECTION B-B



STUD DETAIL
864 Required

Straight or bent anchor studs may be used. If straight studs are used they may be welded upright and then bent to the desired angle shown.



CONSTRUCTION JOINT
AT & ROADWAY.

Fobreeka Pods Required		
Length	Thickness	Width
385mm	8"	1 1/2"

NOTE: Material of equal quality may be used.

REINFORCING STEEL SCHEDULE

10'-8"

10'-8"

10'-8"

STRAIGHT BARS

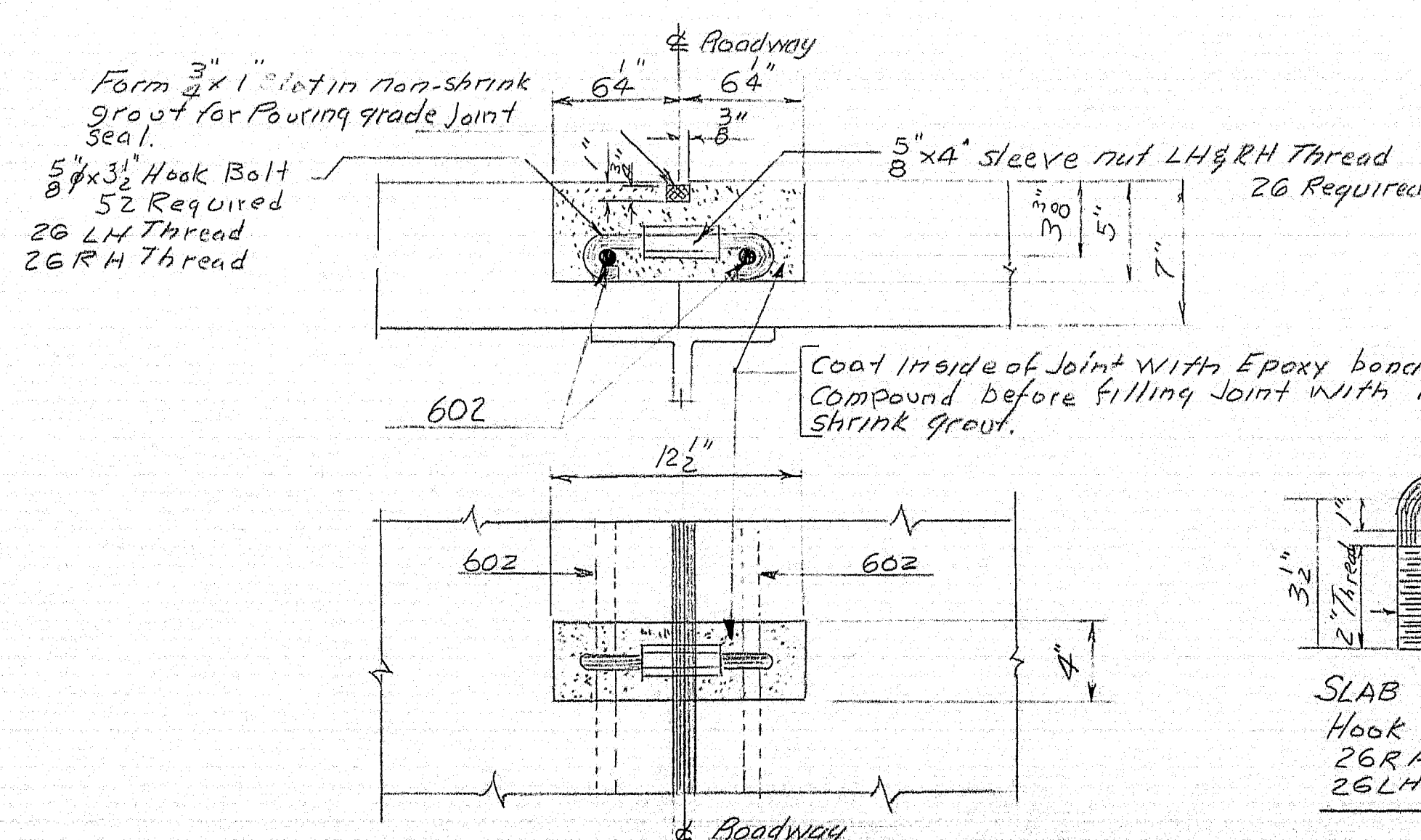
MARK	SIZE	NUMBER	LENGTH	LOCATION
601	#6	68	1'-6"	Dowels - Back walls
602	#6	76	4'-6"	All Panels - Longitudinal
603	#6	12	22'-0"	Curbs
501	#5	4	20'-8"	Back Walls
503	#5	130	10'-8"	All Panels Transverse
401	#4	598	4'-6"	All Panels - Longitudinal

Bent Bars

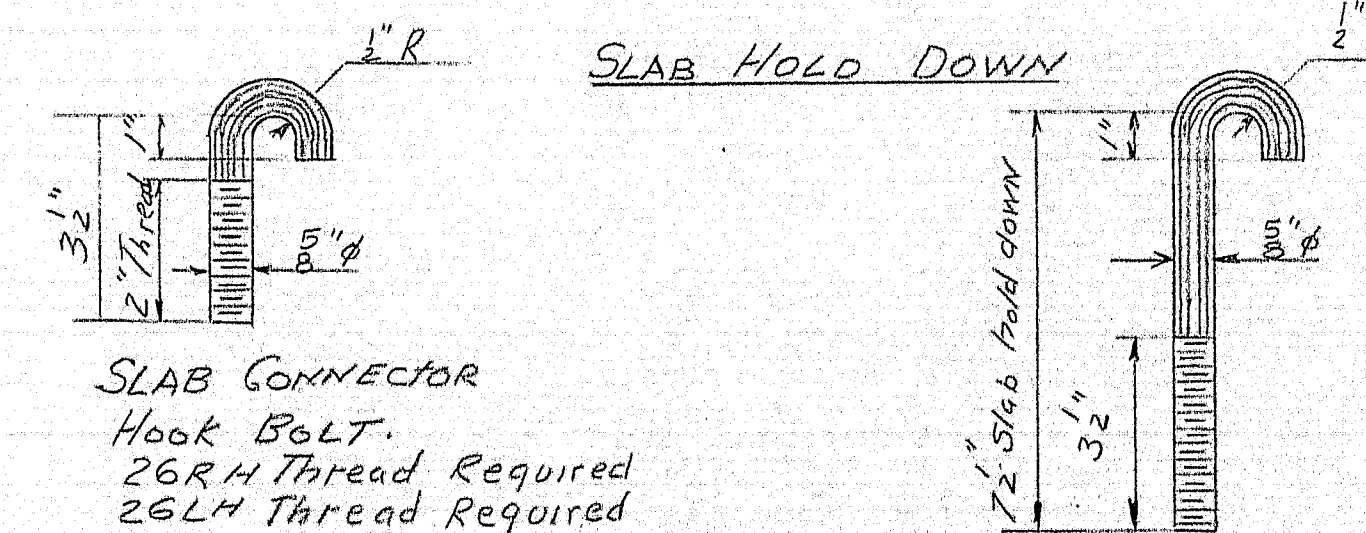
502	#5	130	11'-9"	All Panels - Transverse
505	#5	12	11'-1"	End Thickening A & B
506	#5	130	11'-1"	All Panels Transverse

NOTE: All Dimensions are to \pm Bars.
Steel to be intermediate grade
All Structural steel to be A36

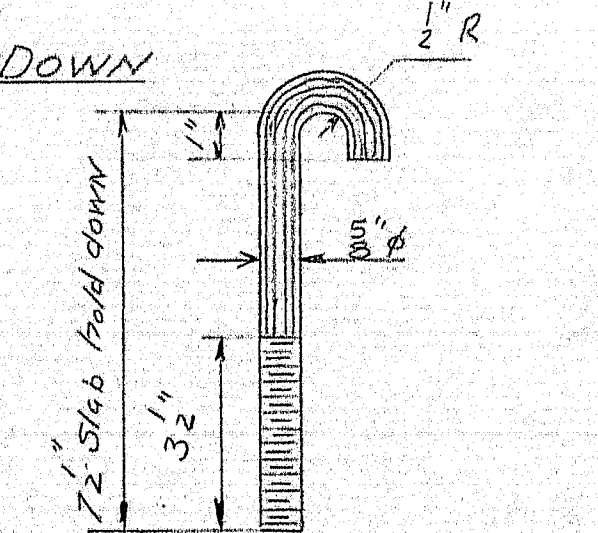
25-8,183



SLAB CONNECTOR
AT ROADWAY



SLAB CONNECTOR
Hook Bolt.
26RH Thread Required
26LH Thread Required



HOLD DOWN Hook Bolt
260 Required